

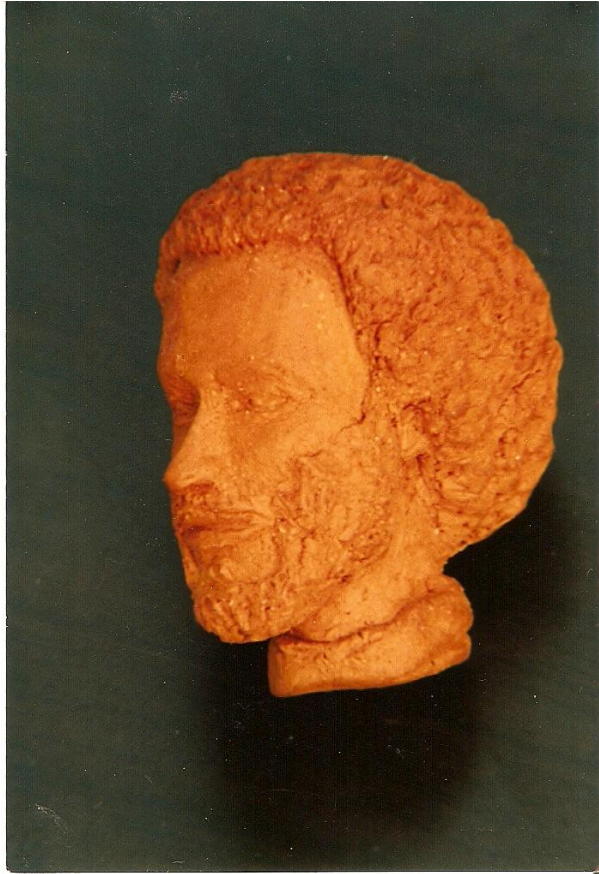
## Gang durch meine eigene „Kleinkunst“-Galerie, Fortsetzung



Nieperfitz in der Lüneburger Heide, 1967



Mutter und Kind, 2005



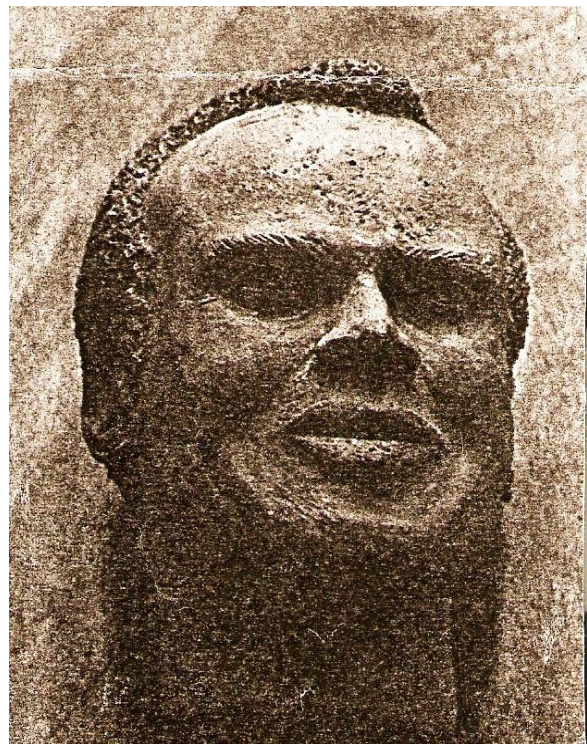
Selbstportrait, 1985, ca 3 cm hoch



Kopf, 1985



Halbplastik, 1983, verschenkt



Harry Belafonte, 1991, verschenkt



Küssende, 1999



Kussblume



Kussringen



By incident: almost Nkrumah, 2005



Badende, 2001



Meine persönliche Regierung, 1998



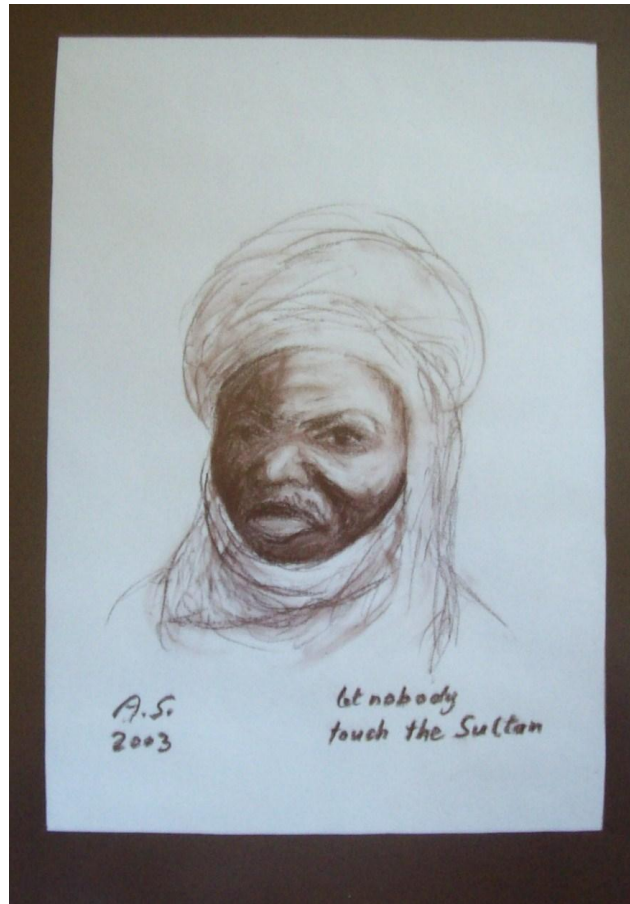
Miriam, 2006



James Baldwin, 2006



Ife Art, 2004



Agadez, 2003

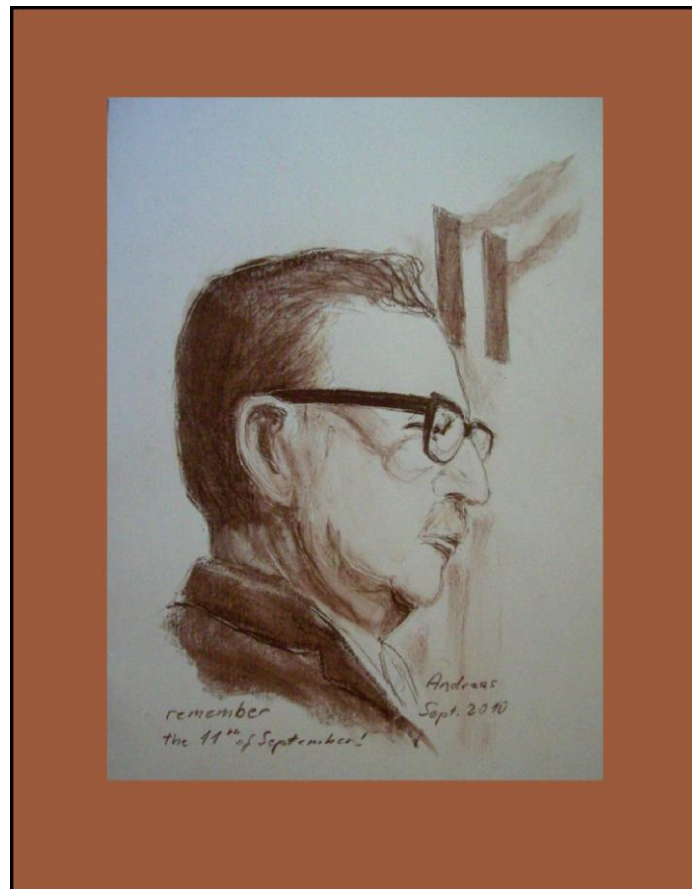


Sons, 2001





Faces, 2010



Salvador Allende, 2010



Liebeslinien, 2003



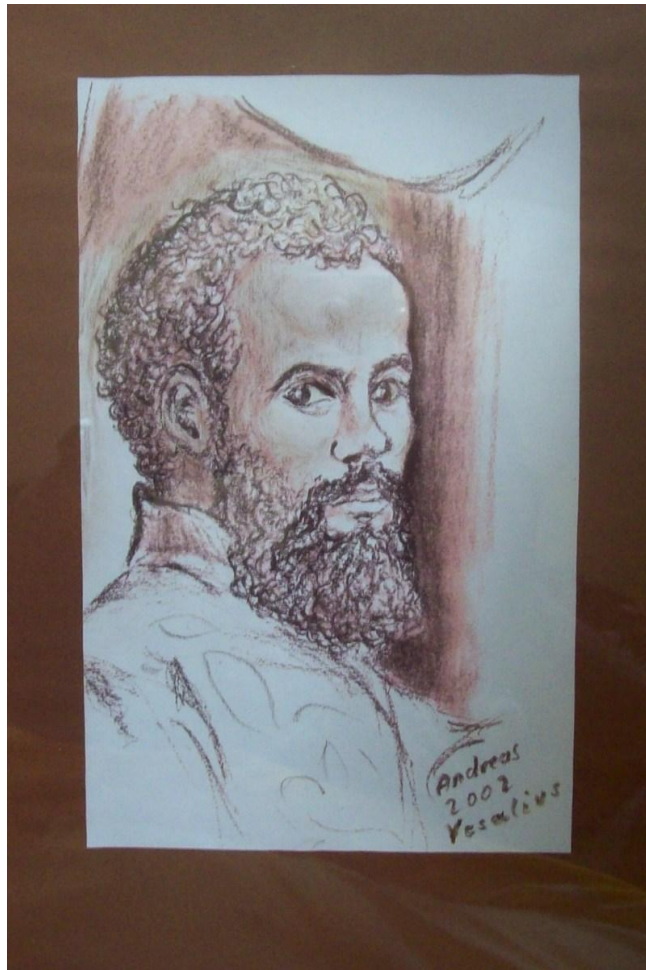
Family, 1984



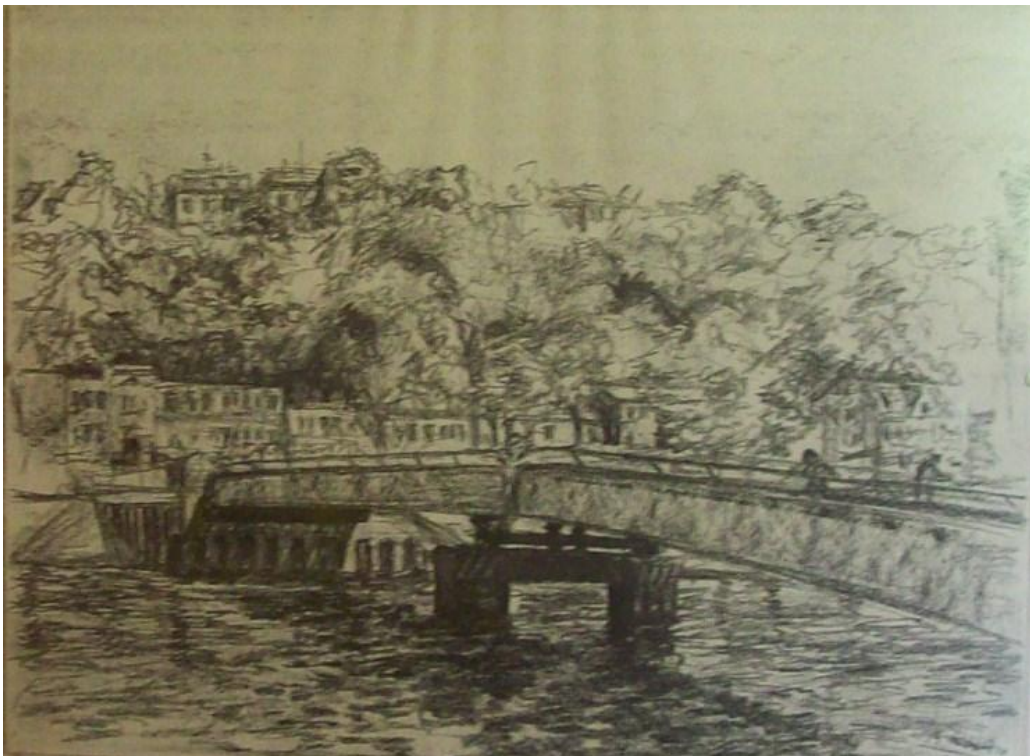
Egypt, 1984



Sahel, 1984



Andreas Vesalius, „Father of modern Anatomy“



Anleger Neumühlen, 1967